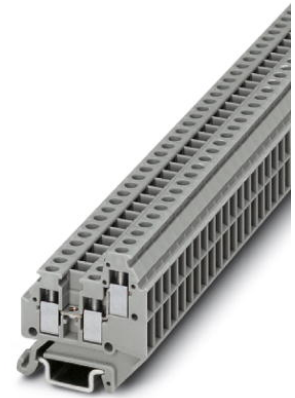


MT 1,5-TWIN

Order No.: 3001682

<http://eshop.phoenixcontact.de/phoenix/treeViewClick.do?UID=3001682>

Modular terminal block with screw connection, cross section: 0.14 - 1.5 mm², AWG: 30 - 14, width: 4.2 mm, color: gray

Commercial data

EAN	4017918100858
Pack	50 Pcs.
Customs tariff	85369010
Weight/Piece	0.003561 KG
Catalog page information	Page 349 (CL-2007)

Product notes

WEEE/RoHS-compliant since:
01/01/2003



<http://www.download.phoenixcontact.com>
Please note that the data given here has been taken from the online catalog. For comprehensive information and data, please refer to the user documentation. The General Terms and Conditions of Use apply to Internet downloads.

Technical data

General

Number of levels	2
Number of connections	3
Color	gray
Insulating material	PA
Inflammability class acc. to UL 94	V0

Dimensions

Width	4.2 mm
Length	28 mm

Technical data

Rated surge voltage	4 kV
Pollution degree	3
Surge voltage category	III
Insulating material group	I
Connection in acc. with standard	IEC 60947-7-1
Nominal current I_N	17.5 A (the maximum load current must not be exceeded by the total current of all connected conductors)
Nominal voltage U_N	400 V

Connection data

Conductor cross section solid min.	0.14 mm ²
Conductor cross section solid max.	1.5 mm ²
Conductor cross section stranded min.	0.14 mm ²
Conductor cross section stranded max.	1.5 mm ²
Conductor cross section AWG/kcmil min.	26
Conductor cross section AWG/kcmil max	16
Conductor cross section stranded, with ferrule without plastic sleeve min.	0.25 mm ²
Conductor cross section stranded, with ferrule without plastic sleeve max.	0.75 mm ²
Conductor cross section stranded, with ferrule with plastic sleeve min.	0.25 mm ²
Conductor cross section stranded, with ferrule with plastic sleeve max.	0.75 mm ²
2 conductors with same cross section, solid min.	0.14 mm ²
2 conductors with same cross section, solid max.	0.5 mm ²
2 conductors with same cross section, stranded min.	0.14 mm ²
2 conductors with same cross section, stranded max.	0.5 mm ²
2 conductors with same cross section, stranded, ferrules without plastic sleeve, min.	0.25 mm ²
2 conductors with same cross section, stranded, ferrules without plastic sleeve, max.	0.34 mm ²

Type of connection	Screw connection
Stripping length	6 mm
Internal cylindrical gage	A1
Screw thread	M 2
Tightening torque, min	0.22 Nm
Tightening torque max	0.25 Nm

Certificates / Approvals

Approval logo



CSA

Nominal voltage U_N	300 V
Nominal current I_N	15 A
AWG/kcmil	28-14

UL

Nominal voltage U_N	300 V
Nominal current I_N	15 A
AWG/kcmil	30-14
Certification	BV, CCA, CSA, DNV, GL, GOST, KEMA, LR, UL

Accessories

Item	Designation	Description
Assembly		
3002979	D-MT 1,5-TWIN	Cover, width: 1 mm, color: gray
1401637	E/MBK	End bracket, width: 6.2 mm, color: gray
1401763	NS 15 AL PERF 2000MM	DIN rail, material: Aluminum, perforated, height 5.5 mm, width 15 mm, length: 2 m
1401682	NS 15 PERF 2000MM	DIN rail, material: steel, perforated, height 5.5 mm, width 15 mm, length: 2 m
1401695	NS 15 UNPERF 2000MM	DIN rail, material: Steel, unperforated, height 5.5 mm, width 15 mm, length: 2 m

Bridges

3001569	FBRN 4-4 N	Fixed bridge, 4-pos.
3001572	FBRN 5-4 N	Fixed bridge, 5-pos.
3001585	FBRN 6-4 N	Fixed bridge, 6-pos.
3001598	FBRN 7-4 N	Fixed bridge, 7-pos.
3001608	FBRN 8-4 N	Fixed bridge, 8-pos.
3001624	FBRN 10-4 N	Fixed bridge, for cross connections in the terminal center, with fixed crimped rolls, screw heads without insulation, 10-pos., divisible
3001637	FBRN 20-4 N	Fixed bridge, 20-pos.

Marking

0803634	ZBFM 4:SO/CMS	Special printing, Zack marker sheet, flat, 100-section, divisible, marking according to customer requirements
---------	---------------	---

Tools

1205037	SZS 0,4X2,5	Screwdriver, bladed, matches all screw terminal blocks up to 1.5 mm ² connection cross section, blade: 0.4 x 2.5 mm
---------	-------------	--